



SITTING IN LUXURY

Subtle design techniques ensure that this sample villa caters to all tastes and exudes welcoming warmth

Manishi Aggarwal and Apoorv Singh from New Delhi-based firm Design Cosmos were given a very precise brief by the developers of the housing project – to create a house that would make anyone who steps inside want to live there. This created an odd paradox because the house had to have mass appeal yet remain distinct from sample apartments.

“In sample flats, the areas are small and developers try to make them look spacious so designers typically use a minimalist vocabulary while designing them.

Here, we had to make sure there was a remarkable distinction and a sense of sophistication that distinguishes the villa from the apartments,” says Aggarwal.

Covering a super built up area of 7500 sq ft, the first step was demarcating the areas according to specific purposes. This was essential because the developer’s plan had not allocated any of the five bedrooms for any particular purpose and had not categorically defined areas.

“We defined the rooms in terms of who we imagined the occupants to be.

Facing page: The *jaali* screens in this 7500 sq ft house are used simultaneously to combine and separate spaces between the ground and upper floors. Designed by Manishi Aggarwal of Design Cosmos, the informal living area in this house is the only space on the ground floor to break the neutral colour scheme and the touch of wine tones makes it more personal.

Above: The walls have been clad with panels of brown mirror. This adds a rich sepia tone to everything it reflects and unlike regular reflecting mirror, it blends into the space.



This determined the hierarchy and the kind of design each room would have," says Singh.

The house is spread over three floors. The ground floor has the formal areas, which are the living room, a family lounge, kitchen and dining area. There is also a bedroom on this floor that was allocated to the elders of the family.

The approach to the formal areas was to create a modern Baroque design, which is a balanced mix of modern and classical designs. Along with this, a play of colours

has been used throughout the house to define areas.

"We decided to experiment with black and gold in the formal areas even though there was some apprehension about using black. However, I feel nothing spells sophistication and class like this combination does," says Aggarwal.

The double-height space above the dining table has a large Italian chandelier dropping into it. The designers have created a router cut jaali to screen the dining area from the family living room on the

Facing page: The formal dining area is an example of the running theme of gold and black which spells luxury and sophistication. A single sofa in printed upholstery balances the solid colours of the rest of the furniture.

Above: Gold wallpaper provides the ideal backdrop for the modern Baroque furniture and gives the space richness suitable for a villa. To match this, the flooring is muted in a cream shade. Select spots have inlay work in Italian stone.



ground floor. The same jaali extends to the upper floor lending connectivity to the design as well as the areas.

"The jaali was introduced because in the original plan there was no clear demarcation of areas and we wanted the spaces to be neatly separated without having visual barriers," says Singh.

"We have added screens at various places because from a practical point of view, if someone were living in that house it would be necessary to divide the areas. The family lounge and dining area are

continuous except for the jaali. We also provided seating at the entrance to serve a practical purpose and we have screened the living room from this area so that the entire house is not exposed to everyone who comes to the door," says Aggarwal.

Apart from screens, the spaces are demarcated through their aesthetics. The living room is plush and dramatic. The furniture is heavy as compared to the family room where purple upholstery has been used.

This breaks away from the

Facing page and top: The customised dining table is finished in black matte wood with gold leafing. The chandelier is at eye level on the first floor. It provided the inspiration for the jaali design, which is a traditional Indian concept but acquired a modern finish and pattern in this design.

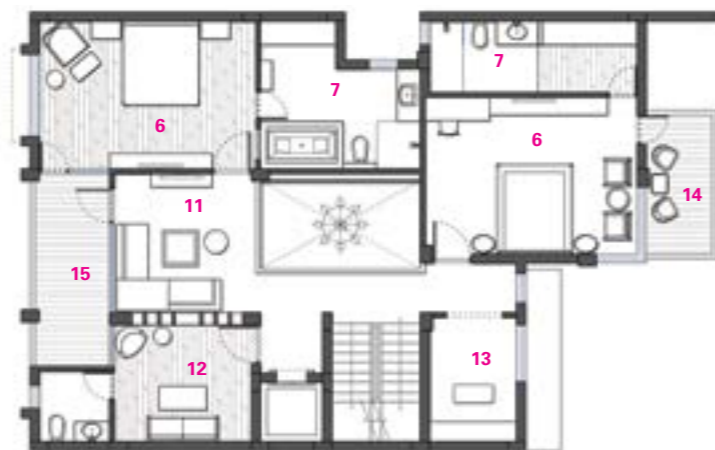
Above left: The bedroom on the uppermost floor is designed in grey tones and straight lines. The frame of the bed gives it a cuboid appearance.

Above: To make the room appear more spacious, it has been decorated entirely in white and silver. Rough wood has been used for the flooring.

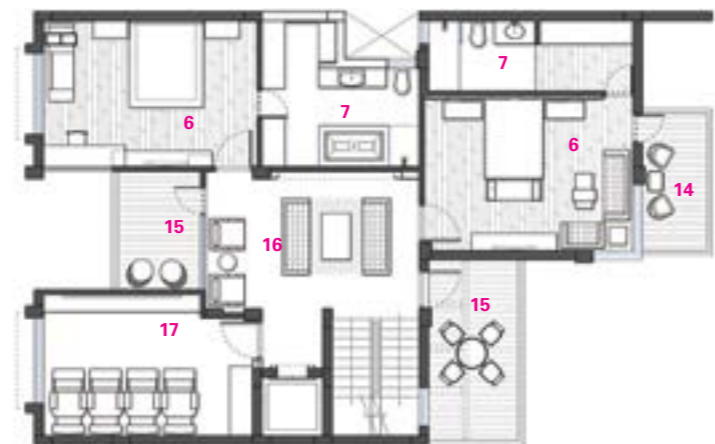
Ground floor



First floor



Second floor



Owners: Tulip Infratech Pvt. Ltd.
Interior designers: Apoorv Singh, Manishi Aggarwal; Design Cosmos
Associations: Council of architecture (COA), Indian Institute of Interior Designers (IIID)
Builder: Tulip Infratech Pvt.Ltd
Kitchen: Lotus Kitchen
Cladding: Unistone
Flooring: JCR Marbles, Span Floors
Wallcoverings: Elemento, Fabrich
Paints: Asian Paints
Lighting: Fiam, Phillips
Basin: Jaquar
Taps: Jaquar
Shower: Jaquar
Fitting: Jaquar
Toilet: Jaquar
Accessories: FCML, Good Earth, Oma

Story by Namrata Shah
Photography by Maniyarasan R



Above: The marble bathrooms are spacious and accommodate bathtubs along with other amenities.

Legend for plans: 1 entry foyer, 2 formal living room, 3 dining, 4 kitchen, 5 informal living room, 6 bedrooms, 7 bathrooms, 8 garden, 9 backyard, 10 water body, 11 family room, 12 study, 13 prayer room, 14 balconies, 15 terraces, 16 lounge, 17 entertainment room

➔ **Share this story online at**
[Trendsideas.com/go/42235](https://www.trendsideas.com/go/42235)

neutral tones used in the formal areas, as the living room is distinctly more private and informal. The idea of interactive family spaces is also an important aspect of the design.

There are family lounges on each floor. The staircase opens up to one on the first floor, which also has the master bedroom, bedrooms for the children, a small room that was converted into a study and a prayer room.

The second floor has yet another family lounge, a guest bed-

room, an entertainment room and an additional bedroom.

“As you ascend, the vocabulary softens and becomes more modern in design. For the bedrooms, we drew on usual stereotypes so that people can make associations through colour and the type of furniture to determine, which room would suit whom,” says Singh.

All the bathrooms are designed in Italian stone. On the ground floor is a three-fixture bathroom while the ones on the upper floors have Jacuzzis as well.

KNOW YOUR ARCHITECT:

APOORV SINGH & MANISHI AGGARWAL: DESIGN COSMOS



Apoorv Singh and Manishi Aggarwal established Design Cosmos in 2008. Right from their first project, a residence in Jalandhar, Punjab, which incorporated a modern minimal approach, they have strived to give a contemporary yet Indian feel to every space. One of their landmark projects has been the Tulip Infratech office in Gurgaon. The duo, with their designs, strive to establish an integrated relationship between people and architecture. Apart from residences, Design Cosmos also specialises in retail outlets, offices, hospitality and commercial complexes. The firm has also recently been conferred the Rajiv Gandhi Global Vision Award 2012 for Architecture. For further information, email studio.designcosmos@gmail.com or call +91- 124-4203676/ 9871470887

